

Rose & Sweet Briar

HOLIDAY COTTAGES

Janet Hind
Hill Farm
Kersall
Newark
Nottingham
NG22 0BJ
Tel. 01636 636 274



We think we live in the most beautiful place in Nottinghamshire. One of our greatest pleasures is to share it with our guests. So come and enjoy the peace and beauty of Kersall in the Newark and Sherwood Countryside.



Sweet Briar Cottage

Situated next to Rose Cottage this lovely cottage has two bedrooms, one Twin room and one double room, one which overlooks the garden and lawns, and patio area. They share a bathroom with champagne suite, WC and Electric shower. There are radiators in all rooms.



The dining kitchen is compact and fitted with plenty of kitchen units and a storage pantry.

There is an excellent range of kitchen equipment, Fridge/freezer, Full cooker, Washer/dryer, and Microwave oven. A kitchen table and four chairs.

There are two steps up to the kitchen door from the drive way and safe parking is allocated for each cottage.

The cottage has a large patio area with garden furniture and overlooks the beautiful views over open countryside.

The sitting room has been thoughtfully designed to create a country cottage atmosphere with brick built fireplace which houses an electric log effect fire for those chilly evenings.

Sitting room furniture consists of a three seater settee, easy chair, colour TV etc.



Rose Cottage



The Rose Cottage is single storey and is beautifully decorated. It has a beamed ceiling that gives a country cottage character to the cosy living room. It is ideal for two people but has a sofa bed for that extra guest or two.

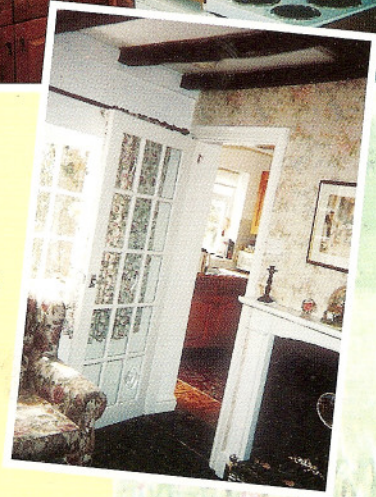
There is a heater and also an electric log effect fire housed in an original Victorian fire place. There is a colour TV and carpets throughout.

The twin bedroom has a french door and overlooks the garden. It contains a double wardrobe, dressing table and chest of drawers.

The bathroom has a full suite, heater and electric shower.

The pretty dining kitchen is well equipped with full electric cooker, washer dryer, fridge and microwave oven. There is also a dining table and four chairs.

Just outside the kitchen is a patio area with garden furniture and safe parking for a car etc.



KERSALL IN SPRING

Sea of green before my eyes
the miracle of Spring
for Spring has come to Kersall
a truly lovely thing.

Violets in the hedgerows
Primroses down the lane
Crocuses and daffodils
are with us once again.

I sit before my window
oh! what a wondrous sight
a patchwork quilt of nature
is spread for my delight.

I see the valley down below
with greens of every hue
I write this poem as I sit here
I want to share it all with you.

I see the stream below me
it has no time to stay
it wanders through the patchwork
and babbles on its way.

The lane looks like a ribbon
of silver winding high
then disappears completely
when at last it finds the sky.

I see apple trees and plum trees
cherry blossom too
but its my ever faithful pear tree
that gives us our first hue.

Millions of tiny blossoms
clusters of snowy white
alight on every branch now
I thank God for my sight.

For spring has come to Kersall
bringing hope to all around
I thank God every day now
for this heaven that I have found.

Written 1980
B. Wood

